

MEMORIAL DAY TRIPLE ESTATE AUCTION

Monday, May 27, 2024 – 8:00 a.m.

Located at 8160 Co Rd 138, St. Cloud, MN
(1.5 mi. West of the Mill's Fleet Roundabout)

TRAVEL TRAILER, VEHICLES, BOAT, AND MOTORCYCLE

- '18 Forest River Grey Wolf Toy Hauler (like new condition-minimum bid \$15,000)
- '07 Honda Pilot - 8 Passenger (198,xxx miles)
- '01 Chevy Z71 1500 4X4 (rusty 312,xxx miles)
- '92 Chrysler LeBaron 2 dr convertible (94,xxx miles)
- '90 Chev 4x4 1500 pickup w/ signage warning light board (111,xxx miles)
- '90 Ford Bronco II (122,xxx miles/needs brake work)
- '86 Honda Gold Wing w/new tires (43,xxx miles/does not start)
- 18 ft. Lund Aluminum Fishing Boat w/bunk trailer, 3 motors, cover



FARM TRACTORS AND EQUIPMENT

- 1958 John Deere 520 w/3pt, fenders, new rubber
- Oliver 77 w/new paint (not run in five years)
- John Deere 3x16 3pt plow
- John Deere 12' Field Cultivator with cylinder lift
- John Deere 613 brush cutter
- 3pt Pocket Gopher poison unit
- 3pt cable plow unit
- Old elevator w/electric motor for stacking firewood
- 8' x 16' oak hay rack (no gear)
- Two wheel trailer SNT (sells no title)
- 300,000 LP or Propane Const. heater
- Lawn chairs, lawn sweeper, yard tools
- Lots of rakes, shovels, brooms, and forks



SPECIAL ITEMS

- Set of Bongo Drums and stand
- Glass display of Northern and Crappie fish (6' long)
- Mounted Buck display
- 12) Original Stawarski wildlife oil paintings
- 15-Shelf Upright Wine Cooler
- Small Wine Chiller and Small Fridge
- Steel wheel wagon and Wood wheel wagon
- Harness, collars, reins
- Old primitive gas/oil cans and tools
- Platform scale, cast iron stove, old Maytag washer
- One trailer of glassware: Fostoria, Depression, Fiesta, Red Wing
- Lots of old toys, games, puzzles, Barbie dolls and accessories
- Lots of dolls, metal doll houses, furniture
- Elvis Presley collection - pictures, sign, and more
- Some Coca-a-Cola collectibles
- Collection of metal buttons

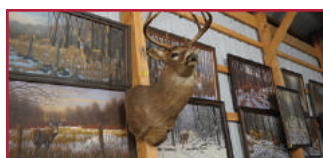
SHOP, YARD, AND GARDEN ITEMS

- John Deere Model S120 Tractor w/42" mower/bagger (44 hrs)
- Cub Cadet 3X 30" Snowblower (Unused)
- DeWalt DG2900 portable generator
- Like-new Toro Power Clear 721 R Snowblower
- Ridgid Table Saw w/extensions
- Craftsman radial arm saw
- Unused Wenner 8' fiberglass step ladder
- Unused Ryobi 3000 psi power washer
- Excell 2800 Honda-powered 2800 psi washer
- 2) Portable air compressors
- 2) 24" circulating fans
- Upright Coleman air compressor
- Rolling work table w/mounted vise
- H.D. battery charger
- 3) Three-wheel bikes and several kids' bikes



FURNITURE AND APPLIANCES

- Queen size sleigh bed w/drawers
- Full size bed, several chest of drawers
- Three dining room tables and chairs
- Buffets, china cabinets, book shelves
- Couch and Chair combos
- Recliners, rockers, arm chairs
- Double keyboard organ
- Fridge-Freezer (Black)
- 2) Chest freezers



Auctioneer's Note:

We are having the Memorial Day Triple Estate live auction starting at 8:00 a.m. There will be eight trailers of household items and we plan to have the big shed full by auction day. Please plan to spend the day with our auction family.

—The Black Diamond Auctions Team

Any and all announcements made on the day of the auction supersede all printed auction marketing materials.



For more information or to view many more photos online:

BlackDiamondAuctions.com

320.241.1200



Col. Frank Imholte
Lic. 73-05-003



Col. Keith Sharer
Lic. 73-05-002



Col. Joseph Imholte
Lic. 73-05-032



Col. Michael Imholte
Lic. 73-05